



GREATER MEMPHIS CHAMBER

Workbook Contents: Local Unemployment Data

1. Local Area Unemployment Statistics Unemployment Rate 2009 - November 2011
2. Local Area Unemployment Statistics Unemployment Rate January - December 2010 (Chart)
3. Local Area Annual Unemployment Statistics 2000-2010
- 4. Local Area Unemployment Statistics Annual Unemployment Rates 2000-2010 (Chart) □**

Please select the tabs at the bottom of this workbook to access contents. If tabs are not visible, maximize your viewing window.



Local Area Unemployment Statistics

2009 - December 2011

Year	Memphis, TN-MS-AR Metropolitan Statistical Area		Shelby County, TN		City of Memphis, TN	
	labor force	unemployment rate	labor force	unemployment rate	labor force	unemployment rate
2009						
January	614,573	9.1	433,989	9.1	307,593	10.0
February	615,164	9.4	433,356	9.3	307,136	10.2
March	613,442	9.6	432,169	9.7	306,453	10.6
April	612,108	9.3	430,769	9.3	305,098	10.1
May	612,230	9.8	431,968	9.8	305,995	10.6
June	625,582	10.5	442,808	10.8	314,126	11.7
July	628,377	10.4	443,111	10.7	314,177	11.6
August	618,064	10.5	435,889	10.8	308,885	11.7
September	613,706	10.3	432,234	10.6	306,172	11.4
October	614,162	10.1	432,790	10.6	306,566	11.5
November	615,029	10.0	432,508	10.5	306,246	11.3
December	611,258	10.3	428,798	10.6	303,718	11.4
Annual	616,141	9.9	434,200	10.1	307,681	11.0
2010						
January	608,217	11.0	431,786	11.1	304,655	12.0
February	608,096	10.6	430,766	10.5	303,675	11.3
March	608,861	10.4	431,492	10.3	304,260	11.2
April	609,950	9.9	432,243	9.8	304,568	10.6
May	611,908	9.6	433,825	9.5	305,731	10.3
June	619,978	10.0	441,616	10.2	311,682	11.1
July	613,182	10.0	435,302	9.8	307,144	10.7
August	606,363	9.8	430,829	10.0	303,929	10.9
September	604,409	9.7	429,408	9.8	302,868	10.7
October	604,719	9.6	429,997	9.8	303,167	10.7
November	607,428	9.7	429,899	9.9	302,990	10.7
December	609,803	9.4	431,278	9.4	303,940	10.2
Annual	609,409	10.0	432,370	10.0	304,884	10.9
2011						
January	603,953	10.3	428,780	10.4	302,429	11.2
February	608,881	10.4	431,451	10.4	304,133	11.3
March	611,986	9.9	434,368	10.0	306,287	10.9
April	619,011	10.1	438,194	10.0	308,883	10.8
May	621,891	10.1	440,399	10.0	310,673	10.9
June	630,380	10.9	448,550	11.1	316,927	12.1
July	631,487	10.4	448,325	10.5	316,630	11.5
August	627,786	10.2	444,197	10.4	313,614	11.4
September	627,616	10.4	444,184	10.8	313,424	11.7
October	628,453	10.0	444,411	10.0	312,959	10.8
November	631,134	9.2	447,029	9.3	314,855	10.1
December*	631,445	8.8	447,289	8.8	314,887	9.5

Source: Bureau of Labor Statistics: Local Area Unemployment Statistics (LAUS) 2009-2011

*The November 2011 data is preliminary.

Revised January 27, 2012 by the GMC Research Dept.

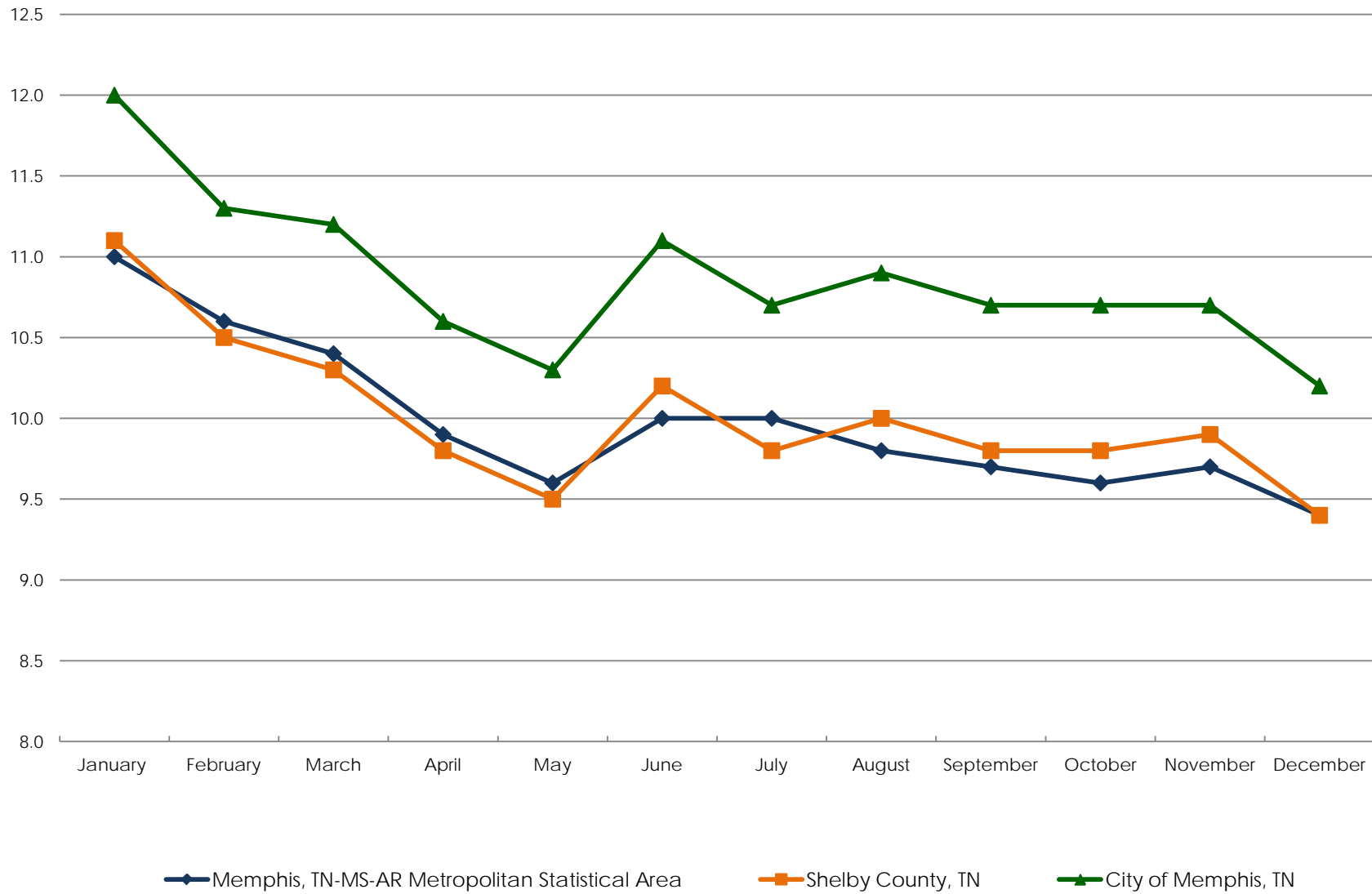


Local Area Unemployment Statistics

Unemployment Rate

January - December 2010

Source: Bureau of Labor Statistics: Local Area Unemployment Statistics (LAUS)





Local Area Annual Unemployment Statistics 2000-2010

Year	Memphis, TN-MS-AR Metropolitan Statistical Area		Shelby County, TN		City of Memphis, TN	
	labor force	unemployment rate	labor force	unemployment rate	labor force	unemployment rate
2000	593,697	3.8	442,438	3.9	306,546	4.9
2001	593,101	4.4	438,823	4.5	304,469	5.6
2002	590,015	5.3	434,196	5.4	301,977	6.7
2003	596,626	5.9	436,201	6.0	303,875	7.5
2004	594,086	5.9	430,456	6.1	299,940	7.6
2005	603,340	6.2	434,479	6.2	307,730	6.9
2006	612,514	5.7	440,687	5.7	310,272	6.4
2007	616,129	5.3	440,701	5.3	312,127	5.8
2008	618,731	6.8	440,238	6.9	311,241	7.6
2009	616,141	9.9	438,004	10.0	308,958	10.9
2010	609,409	10.0	432,370	10.0	304,884	10.9

Source: Bureau of Labor Statistics: Local Area Unemployment Statistics (LAUS) 2000-2010
Revised April 19, 2011 by the GMC Research Dept.



Local Area Unemployment Statistics

Annual Unemployment Rates

2000-2010

Source: Bureau of Labor Statistics: Local Area Unemployment Statistics (LAUS)

